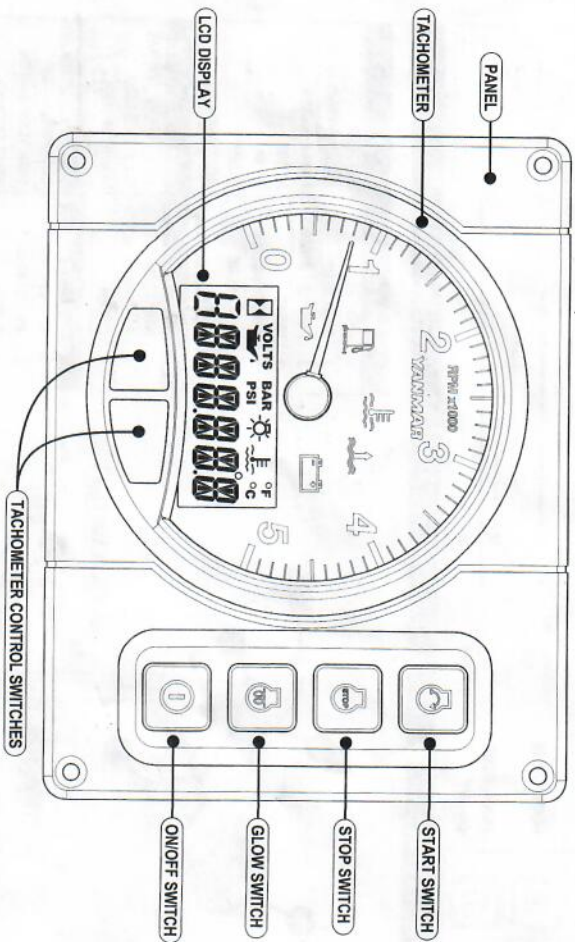




PANEL ASSEMBLY B20

PANEL ASSEMBLY

PANEL ASSEMBLY B20 164100-30100



INDICATOR FUNCTION

When a sensor detects a problem during operation, the indicator inside the tachometer will light and an alarm will sound. Under normal operating conditions, the indicators are off.



Engine Oil Low Pressure Indicator and Alarm

When the engine oil pressure falls below normal, the oil pressure sensor will send a signal to the indicator, causing it to light and the alarm to sound. Stop operation immediately to avoid damage to the engine. Check the oil level and troubleshoot the lubrication system.



Water in Fuel Filter Indicator and Alarm (not on all engine models).

When the water level in the fuel filter/water separator becomes too high, the indicator will light and the alarm will sound. Drain the water from the fuel filter/water separator.



Coolant High Temperature Indicator and Alarm

When coolant temperature reaches the maximum allowable temperature (95°C [203°F] or higher), the indicator will light and the alarm will sound. Continuing operation at temperatures exceeding the maximum limit will result in damage and seizure. Check the load and troubleshoot the cooling system.



Water in Sail Drive Seal Indicator and Alarm

When water is detected between the seals of the sail drive, the indicator will light and the alarm will sound.

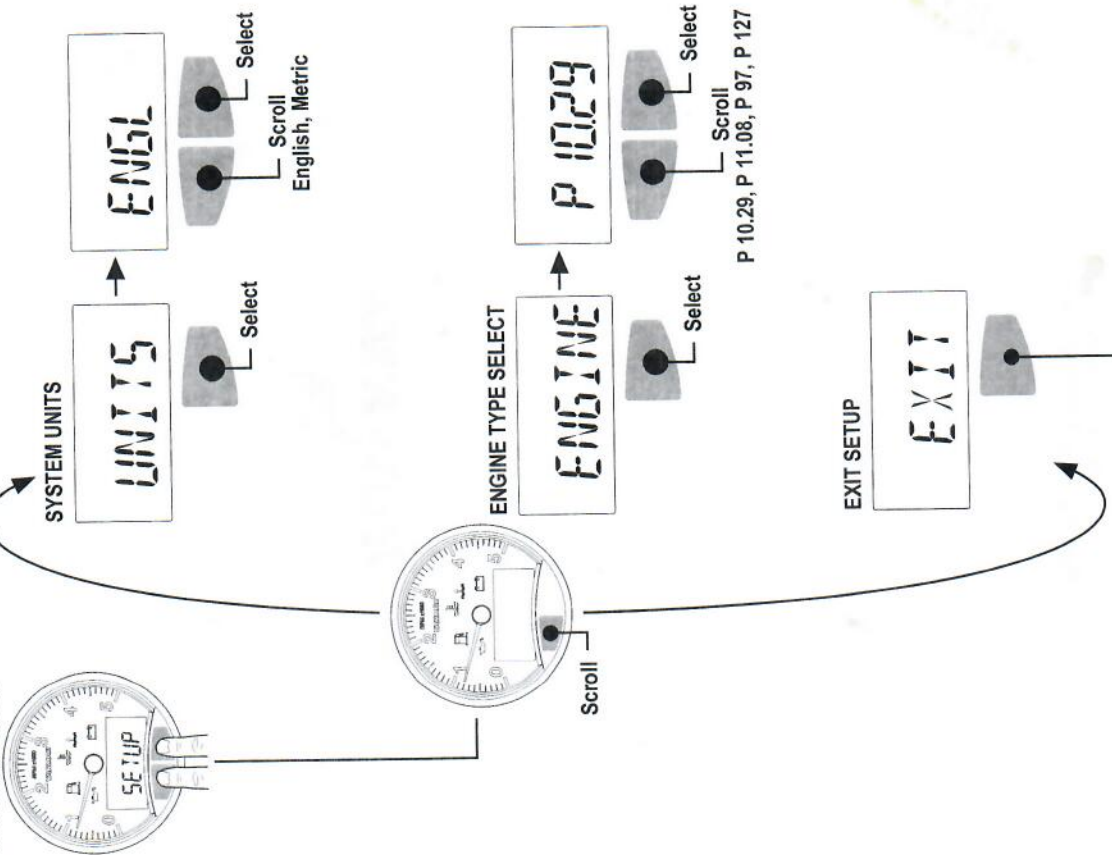


Battery Low Charge Indicator

When the alternator output is too low, the indicator will light. When charging begins, the indicator will turn off.

SETUP SCREEN ACCESS AND CONTROL

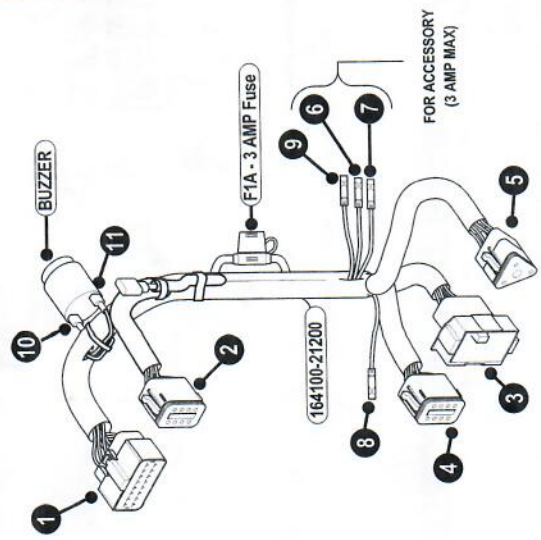
Press and hold BOTH buttons until setup appears



Return To Previous Page
LCD Control

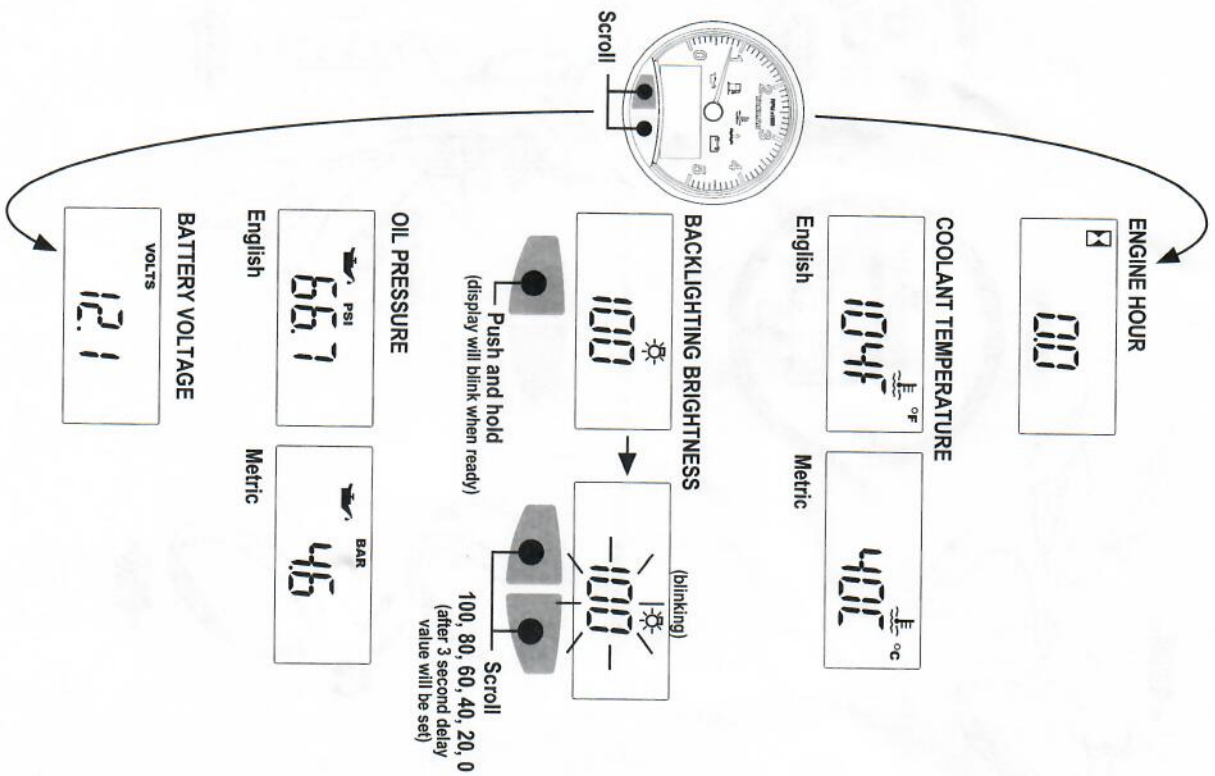
SWITCH FUNCTION	ACTION	BATTERY	ACCESSORY	GLOW RELAY	STARTER RELAY	STOP RELAY
START ENGINE	MOMENTARY ON	●	●	●	●	●
STOP ENGINE	MOMENTARY ON	●	●	●	●	●
GLOW PLUGS	MOMENTARY ON	●	●	●	●	●
PANEL POWER ON-OFF	ON	●	●	●	●	●
	OFF	●	●	●	●	●

WIRE HARNESS

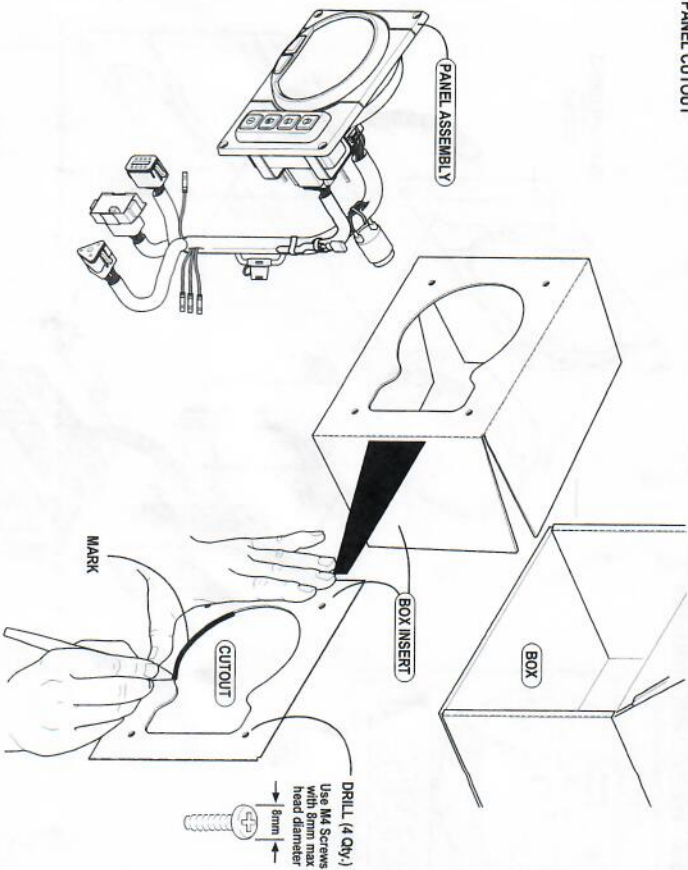


1	RED	BATTERY
2	DARK BLUE	BACKLIGHTING IN
3	PURPLE / WHITE	PANEL POWER
4	WHITE	START
5	WHITE / BROWN	STOP
6	LIGHT BLUE	GLOW
8	BLACK	BOAT GROUND
4	WHITE / BLACK	WATER TEMP SENSOR
5	YELLOW / BLACK	OIL PSI SENSOR
8	GREEN	WATER IN FUEL
1	YELLOW / WHITE	LOW PSI SWITCH
2	WHITE / BLUE	HIGH TEMP SWITCH
4	BLACK	BOAT GROUND
5	YELLOW / GREEN	SAIL DRIVE SEAL
6	ORANGE	TACH INPUT
7	BLUE / BLACK	CHARGE
8	PURPLE / WHITE	PANEL POWER
A	WHITE	START
B	RED	BATTERY
C	LIGHT BLUE	GLOW
6	PURPLE	ACCESSORY
7	BLACK	BOAT GROUND
8	WHITE / BROWN	STOP
9	BLUE / WHITE	FUEL TANK
10	TAN / BLUE	BUZZER OUTPUT
2	PURPLE / WHITE	PANEL POWER
A	PURPLE / WHITE	PANEL POWER
B	PURPLE	ACCESSORY

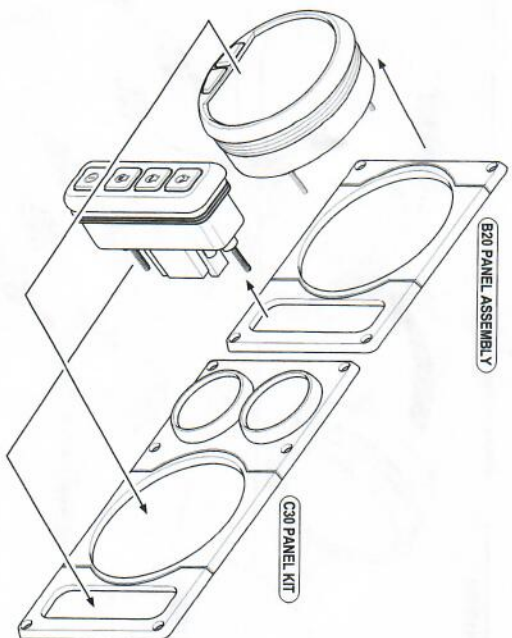
1	BLACK	BOAT GROUND
2	RED	BATTERY
3	PURPLE	ACCESSORY
6	BLUE WHITE	FUEL TANK
7	DARK BLUE	BACKLIGHTING IN
8	WHITE / BLACK	WATER TEMP SENSOR
9	YELLOW / BLACK	OIL PSI SENSOR
10	GREEN	WATER IN FUEL
11	YELLOW / WHITE	LOW PSI SWITCH
12	WHITE / BLUE	HIGH TEMP SWITCH
13	YELLOW / GREEN	SAIL DRIVE SEAL
14	BLUE / BLACK	CHARGE
15	ORANGE	TACH INPUT
16	TAN / BLUE	BUZZER OUTPUT



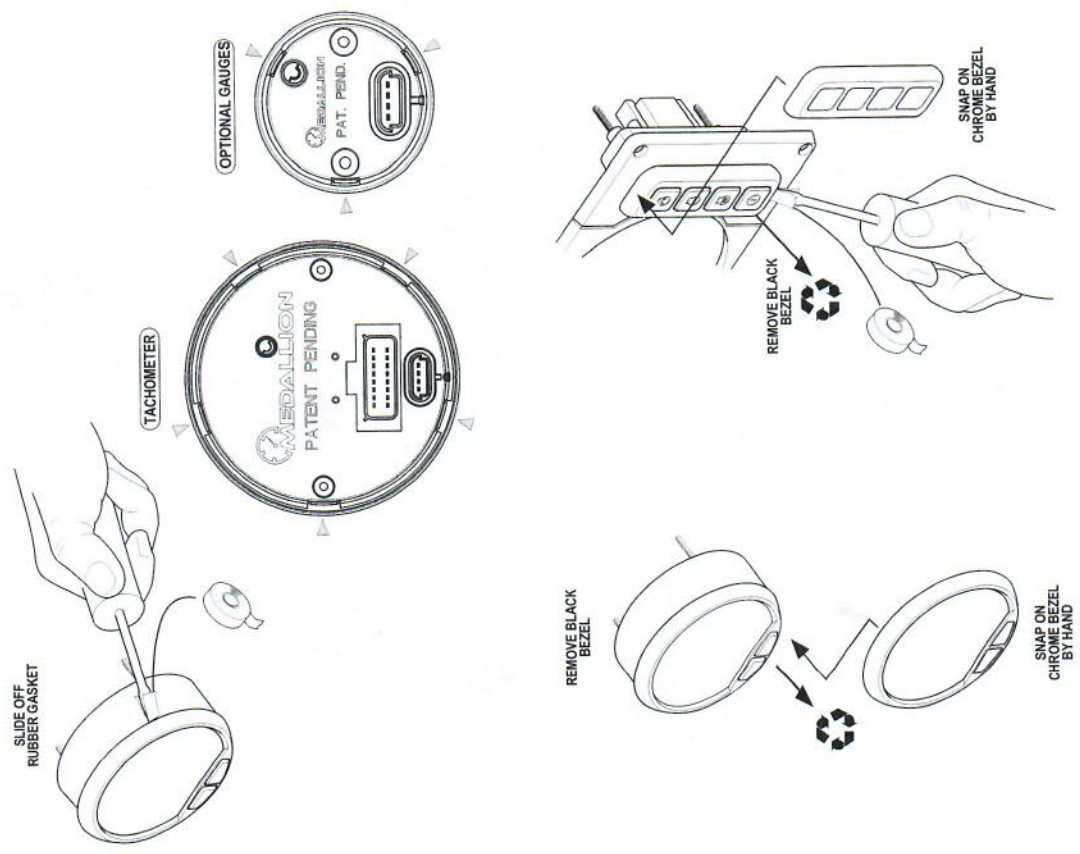
PANEL ASSEMBLY
PANEL CUTOUT



OPTIONAL - B20 TO C30 PANEL CONVERSION

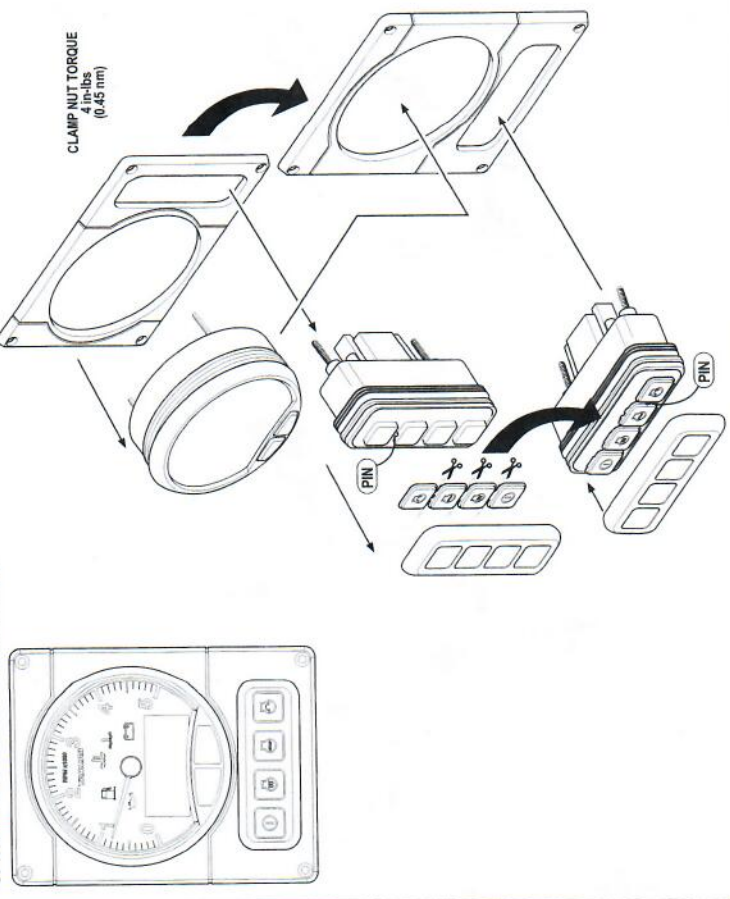


PANEL ASSEMBLY
OPTIONAL - CHROME BEZEL INSTALLATION



CHROME BEZEL KIT 164100-30910

PANEL ASSEMBLY
OPTIONAL - VERTICAL PANEL INSTALLATION



OPTIONAL - GAUGE INSTALLATION

