



First 45

AU R10

KIT FACSLIDE

Kit compatible seulement avec :

Mât aluminium standard

Mât aluminium Régate

Livré non monté – Montage en concession



BENETEAU

FACNOR SA

FIRST 45 STD-REG

FICHE N° 8200324501

BP 222

FACSLIDE : ENSEMBLE RAILS ET INSERTS.

F-50550 ST VAAST

Tel : (33) 02 33 88 50 22

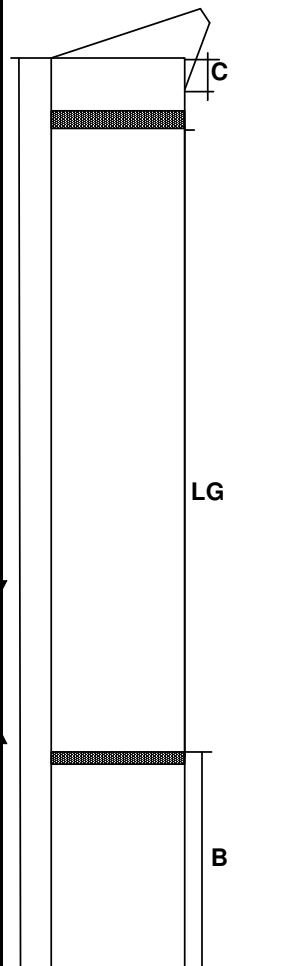
RAIL ANODISE INCOLORE

Fax : (33) 02 33 23 14 27

CHANTIER : BENETEAU

INFORMATION

*Ensemble n° 1 : Sections de rails + inserts + bouchons.
Set n° 1 : Track sections + slugs + caps*



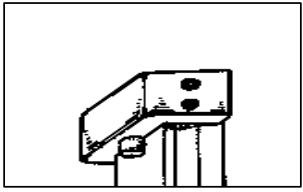
SECTIONS DE RAILS / Track sections			
Rep	Nbre	Lg	Total
A	Rail haut/ Top track		
	1	1320	1 000
B	Rail std/std track		
	10	1700	17 000
C	Rail bas / Low section		
	1		330
	Lg total		18330
	RAIL ANODISE INCOLORE		-30

12
120
4

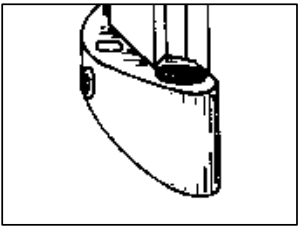
INSERTS : Platines & vis-Slugs & screws	
Nbre	
136	Platines-Slugs Ø 10 mm
136	Vis-screws STHC 5X25MM

BOUCHONS / Caps		Rep.
1	Bouchon haut.	E Top cap
1	Bouchon bas	F Low cap

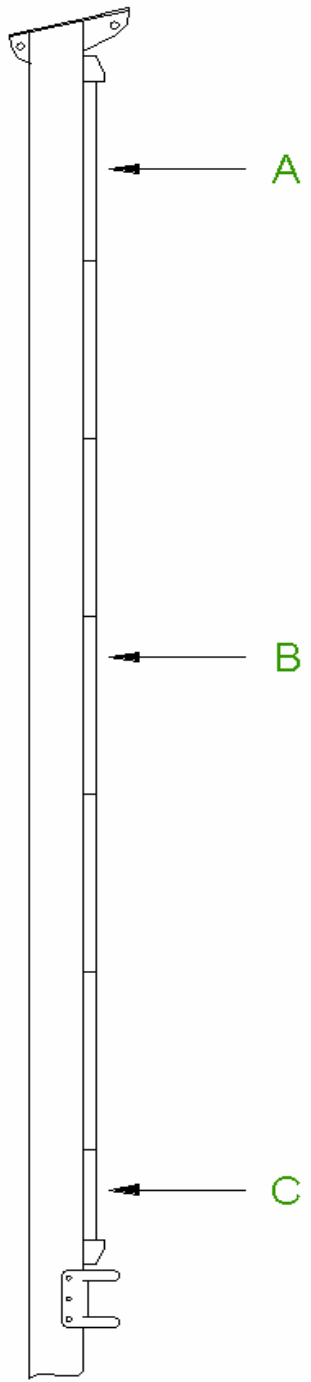
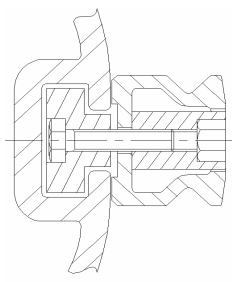
Bouchon haut. Rep. E



Bouchon Bas avec Rail de chargement Rep. F



Fixation des rails par inserts & vis.
Track fitting with slugs and screws.



Inserts/Slugs type: PL N°10

Mat : I830 Type: RDM

CALCUL

A	
B	
C	
LG	18300

COLISAGE/ PARCEL LIST 2
1 parcel = 100x80x1800
POIDS/Weight 10 kg

Observations :
Rails commandé par et livré chez : RDM SPARCRAFT

FACNOR SA**FIRST 45****FICHE N° 82003204502**

BP 222

FACSLIDE : CHARIOTS A BILLES F.20 TORLON

F-50550 ST VAAST

BALL BEARING CARS. F. 20 Hi-load

Tel : (33)02 33 88 22

Date création : 06/11/07

Fax : (33)02 33 23 14 27

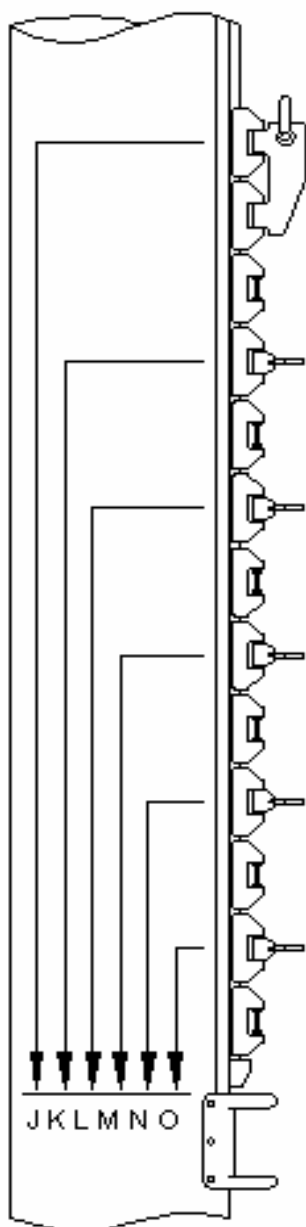
CHANTIER : **BENETEAU**

Mise à jour:

Ensemble n° 2 : Chariots à billes

Set of FACSLIDE Cars

Qty	Type	Ref.	Rep.
1	TETIERE/Headboard	FT 30 torlon	1
5	LATTE/ Batten	FL 20 torlon	3 - 5 - 7 - 9 - 11
6	INTER./ Intermediate	Fi 10 torlon	2 - 4 - 6 - 8 - 10 - 12



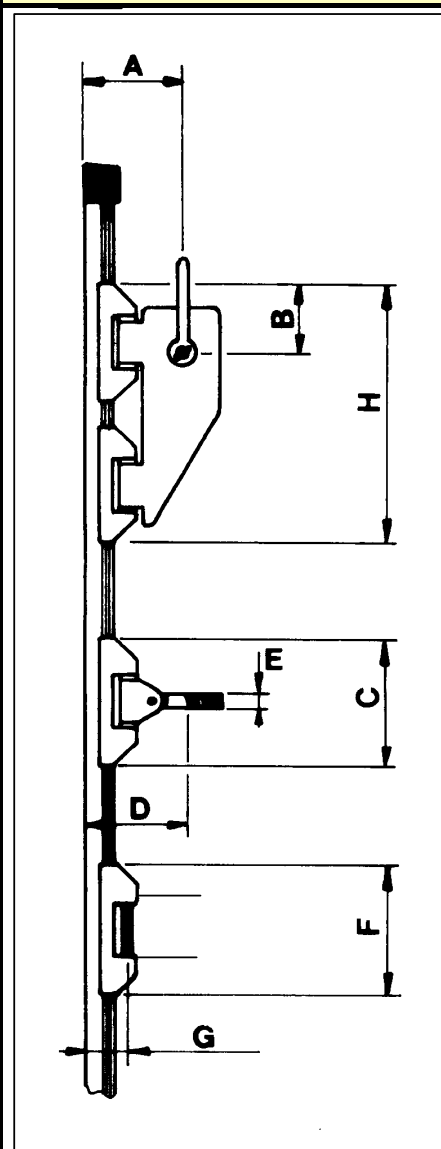
- Rep. 1**
Chariot de têtère FT 20
Headboard car FT 30
- Rep. 2**
Chariot inter. Fi 10
Intermediate car Fi 10
- Rep.3**
Chariot de latte FL 20
Batten car. FL 20
- Rep. 4**
Chariot inter. Fi 10
Intermediate car Fi 10
- Rep. 5**
Chariot de latte FL 20
Batten car. FL 20
- Rep.6**
Chariot inter. Fi 10
Intermediate car Fi 10
- Rep. 7**
Chariot de latte FL 20
Batten car. FL 20
- Rep.8**
Chariot inter. Fi 10
Intermediate car Fi 10
- Rep. 9**
Chariot de latte FL 20
Batten car. FL 20
- Rep. 10**
Chariot inter. Fi 10
Intermediate car Fi 10
- Rep. 11**
Chariot de latte FL 20
Batten car. FL 20
- Rep. 12**
Chariot inter. Fi 10
Intermediate car Fi 10

Cotes en mm

J	670
K	545
L	439
M	333
N	227
O	120

COTES DES CHARIOTS

Car dimensions

**Cotes en mm**

A	65
B	50
C	84
D	75
E	m10
F	64
G	30
H	172

COLISAGE/ PARCEL LIST1 X Carton 200x220x370
Poids

4

Observation(s) :